

ANACONDA SEALTITE® CONDUIT FITTINGS

Durable, corrosion resistant, liquid tight and meeting UL standards

Liquid Tight Flexible Metal Conduit (LFMC) Fittings

NOTE: Some fittings are available in 90- or 45-degree configurations.



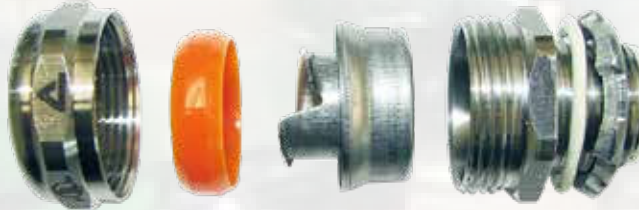
NSF cUL US
 ROHS WEEE COMPLIANT
 FOOD GRADE AISI-316 STAINLESS STEEL



cUL US RoHS
 AISI-316 STAINLESS STEEL



cUL US RoHS
 AISI-304 STAINLESS STEEL



cUL US RoHS
 NICKEL-PLATED BRASS



UL SP RoHS
 ZINC-PLATED STEEL

Liquid Tight Flexible Non-Metallic Conduit (LFNC) Fittings



UL SP RoHS
 Fitting for Type A conduit (CNP only) Zinc-Plated Steel



cUL US RoHS
 Fitting for Type A conduit (CNP only) Nickel-Plated Brass



UL SP RoHS
 Fitting for Type B conduit (NMUA only) Nylon Plastic