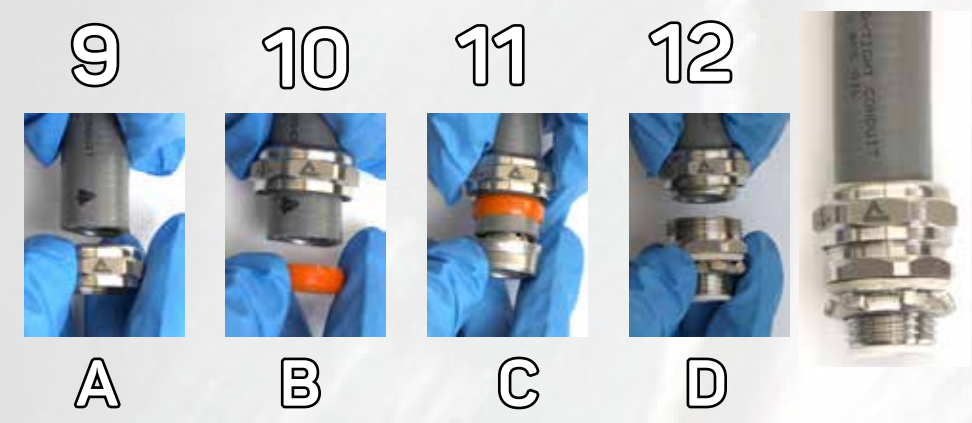
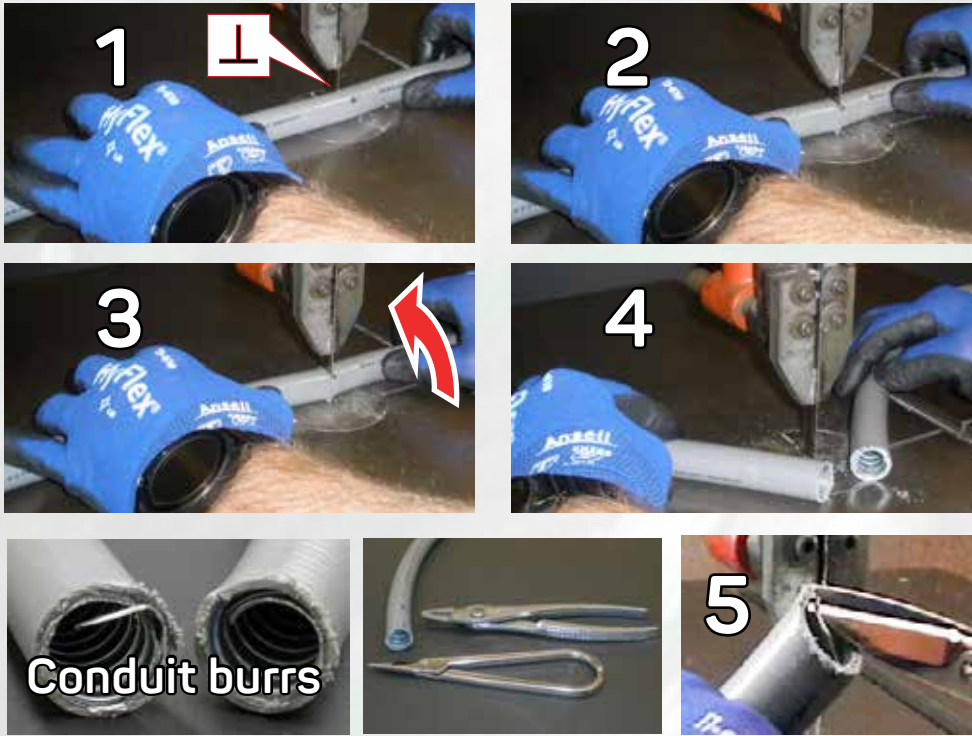



# ANACONDA SEALTITE® METALLIC CONDUIT CUTTING AND FITTING INSTALLATION

Use a band saw with a 1/2-inch wide x 0.025-inch thick, 24 teeth per inch blade, no set. Blade speed should be approximately 350 feet per minute. A hacksaw may be used to cut conduit.



**NOTE:** ANACONDA SEALTITE® fittings for metallic conduit have similar parts, but the Food Grade compact fitting has different seals.

## Conduit Band saw Cutting Tips

- Make sure conduit is perpendicular,  $\perp$ , to the band saw blade.
- Avoid kickback by evenly pressing the conduit against the moving blade.
- Roll the top of the hose to the blade  to finish the cut.

## Fitting Installation Tips

- Before installing a fitting, cut and crimp burrs on the conduit end. Make sure rough edges are removed from inside and outside the conduit.
- Disassemble the fitting.
- Put the clamping nut (A) then sealing ring (B) on the conduit.
- Fully tighten the ferrule (C) in the conduit.
- Fully tighten the fitting body (D) on the clamping nut (A) to UL or CSA torque.